

# Driving the Innovation Economy

## academic technology transfer in numbers

From 1996 to 2015, up to...

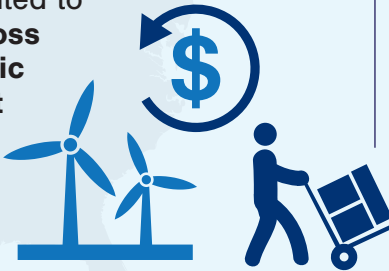
**\$1.3** trillion

contributed to  
**U.S. gross  
industrial  
output**



**\$591** billion

contributed to  
**U.S. gross  
domestic  
product**



**4.3** million

**jobs supported**



**380,000+**

**inventions disclosed...**

**80,000+**

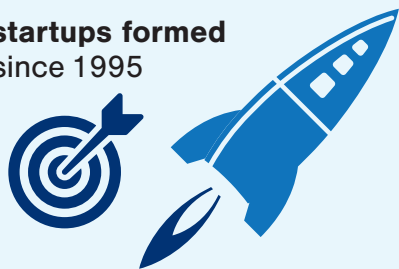
**U.S. patents issued...**



**to research institutions in the past 25 years**

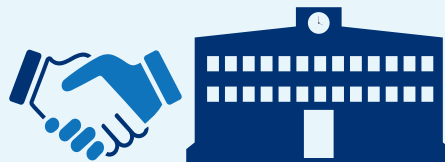
**11,000+**

**startups formed  
since 1995**



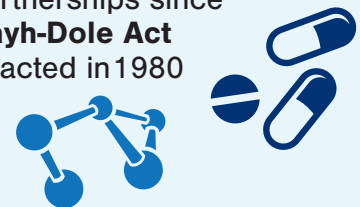
**70%**

**of university innovations  
licensed to startups and  
small companies**



**200+**

**drugs and vaccines  
developed through  
public-private  
partnerships since  
Bayh-Dole Act  
enacted in 1980**



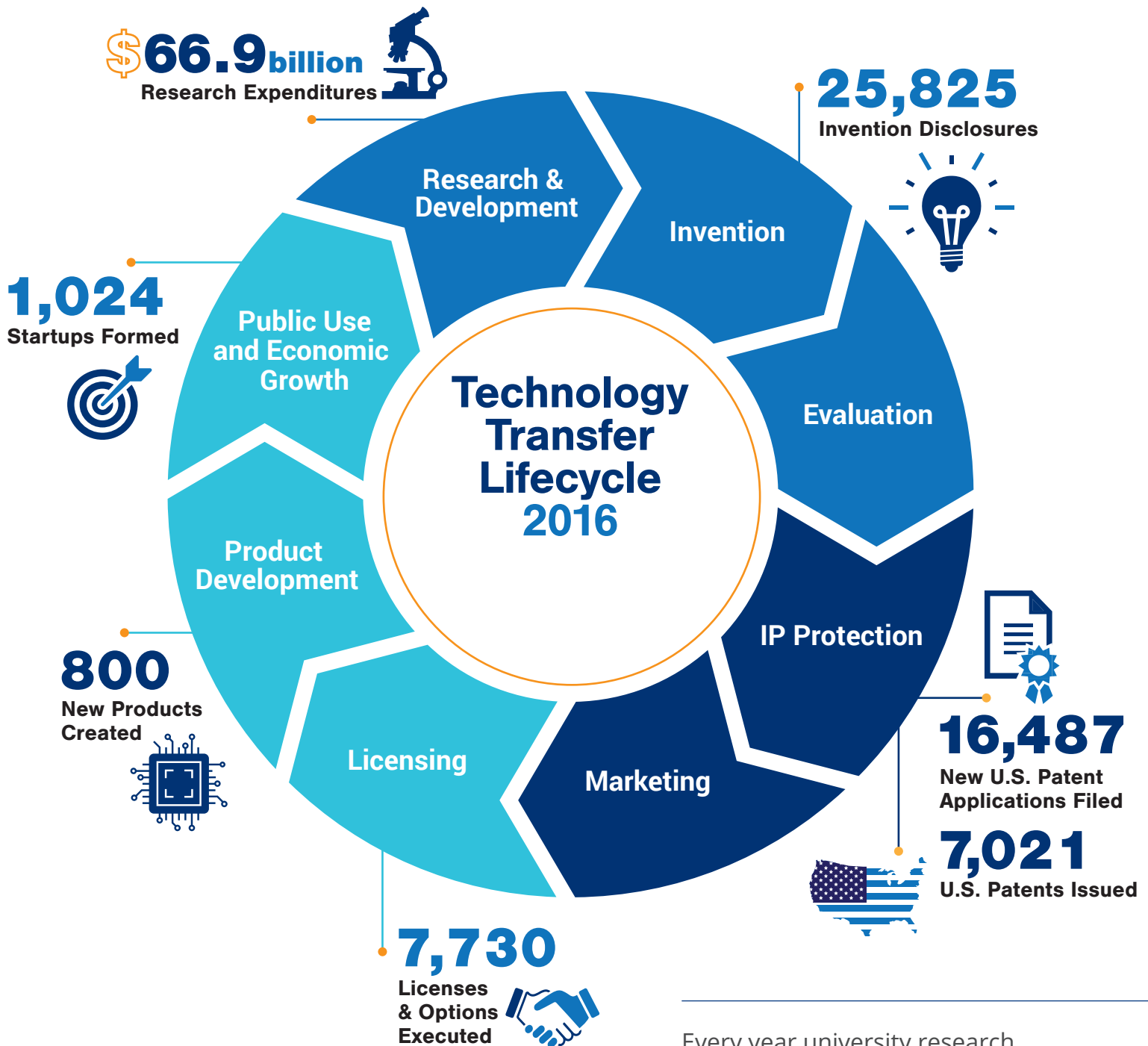
T +1-847-686-2244  
E info@autm.net  
W www.autm.net  
www.twitter.com/autm  
www.facebook.com/autmnetwork

AUTM is the non-profit leader in efforts to educate, promote and inspire professionals to support the development of academic research that changes the world. AUTM's community is comprised of more than 3,100 members who work in more than 800 universities, research centers, hospitals, businesses and government organizations around the globe.

This information was compiled from Association of University Technology Managers (AUTM) and the Biotechnology Innovation Organization (BIO): The Economic Contribution of University/Nonprofit Inventions in the United States: 1996-2015; June 2017 as well as the AUTM U.S. Licensing Activity Survey Highlights 2016 and AUTM Statistics Access for Technology Transfer (STATT) Database, [www.autm.net/STATT](http://www.autm.net/STATT), and the Academic Patent Licensing Helps Drive the U.S. Economy, IPWatchdog.com, June 20, 2017.

# Benefiting Society and the Economy

## academic technology transfer for 2016



For more information  
visit [www.autm.net](http://www.autm.net)

Every year university research yields discoveries with commercial potential.

Technology transfer professionals associated with universities and other academic institutions manage the complex process of shepherding ideas from the lab to the marketplace — from evaluating and protecting discoveries to commercializing the inventions through new and existing companies.