

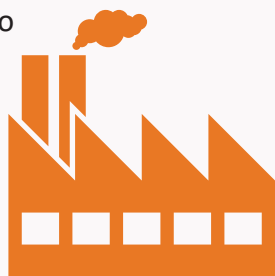
Driving the Innovation Economy

academic technology transfer in numbers

From 1996 to 2015, up to...

\$1.3 trillion

contributed to
U.S. gross
industrial
output



\$591 billion

contributed to
U.S. gross
domestic
product



4.3 million

jobs supported

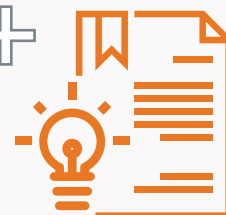


380,000 +

inventions disclosed...

80,000 +

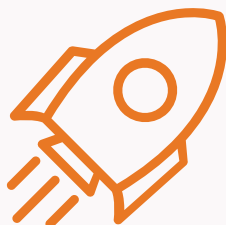
U.S. patents issued...



to research institutions in the past 25 years

11,000 +

start-ups formed
since 1995



70%

of university
licenses are to
start-ups and
small companies



200 +

drugs and vaccines
developed through
public-private
partnerships since
Bayh-Dole Act
enacted in 1980

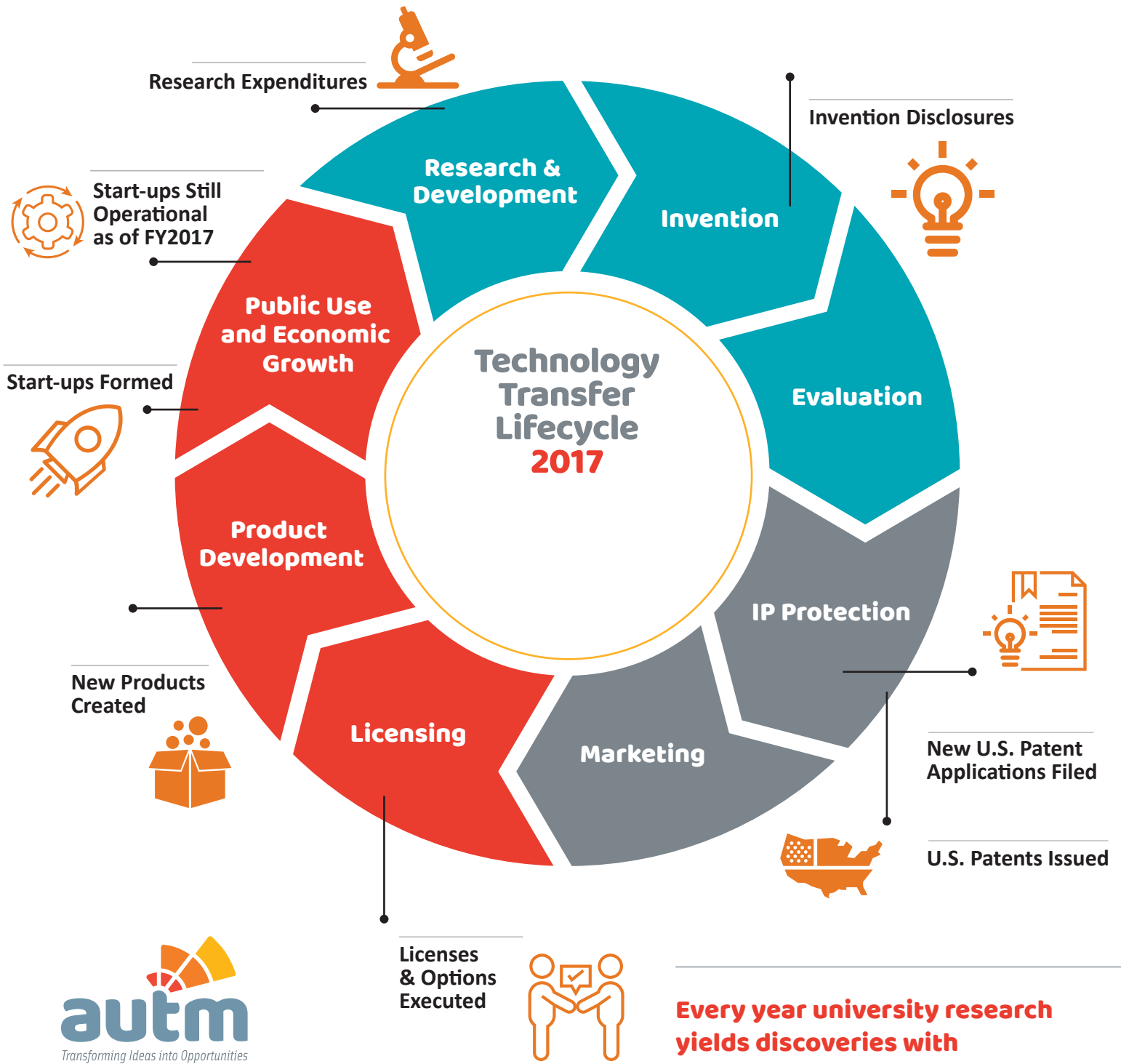


AUTM is the non-profit leader in efforts to educate, promote and inspire professionals, throughout their careers, to support the development of academic research that changes the world. AUTM's community is comprised of more than 3,100 members who work in more than 800 universities, research centers, hospitals, businesses and government organizations around the globe.

T +1-847-686-2244
E info@autm.net
W www.autm.net
www.twitter.com/autm
www.facebook.com/autmnetwork

This information was compiled from AUTM and the Biotechnology Innovation Organization: The Economic Contribution of University/Nonprofit Inventions in the United States: 1996-2015; June 2017 as well as the AUTM's 2017 Licensing Activity Survey and Statistics Access for Technology Transfer Database, www.autm.net/STATT, and the Academic Patent Licensing Helps Drive the U.S. Economy, IPWatchdog.com, June 20, 2017.

Benefiting Society and the Economy academic technology transfer for 2017



Every year university research yields discoveries with commercial potential.

Technology transfer professionals associated with universities and other academic institutions manage the complex process of shepherding ideas from the lab to the marketplace — from evaluating and protecting discoveries to commercializing the inventions through new and existing companies.

For more information
visit www.autm.net