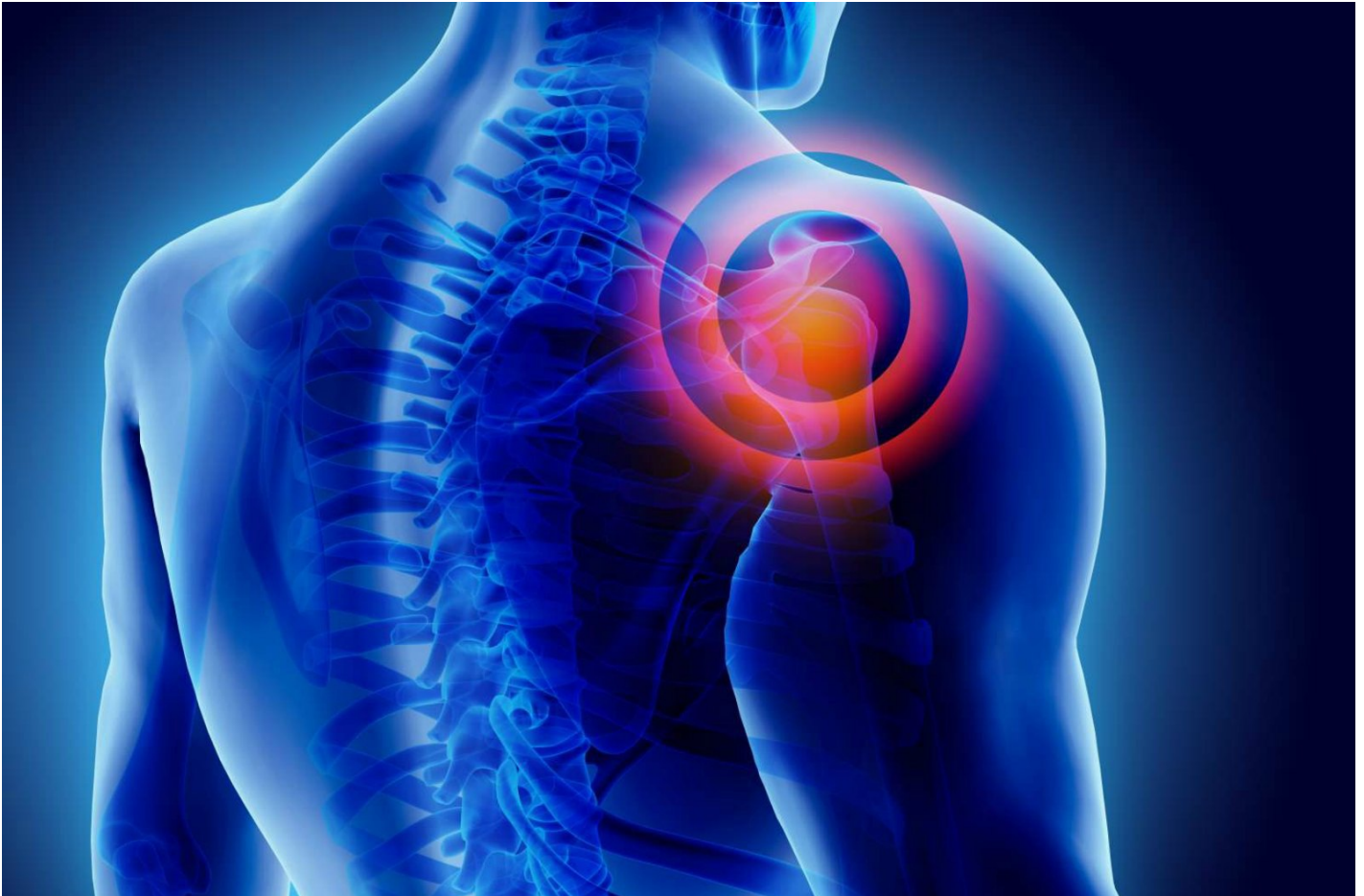


# Shoulder Prosthesis Providing Full Range Of Motion

Columbia University



About 25 million Americans suffer from rheumatoid arthritis or osteoarthritis. One of the worst symptoms of this disease is restricted, painful movement, which can become debilitating as the condition progresses.

Joint replacement is an increasingly popular way to restore function and motion to severely arthritic joints. Louis Bigliani, M.D., chief of the Center for Shoulder, Elbow, and Sports Medicine at Columbia University in New York, N.Y., Evan Flatow, M.D., former Columbia University professor, and Zimmer, Inc. invented the “Bigliani/Flatow Complete Shoulder Solution” in 2000.

This shoulder prosthesis technology provides the restoration of shoulder joint function for people who suffer from pain or disability from osteoarthritis (deterioration of the shoulder joint), rheumatoid arthritis (cartilage inflammation in the lining of the shoulder joint), traumatic arthritis (physical injury to the shoulder joint resulting in arthritis), and certain breaks in the shoulder bones.

The first-of-its-kind surface and the head design of the device help patients achieve full joint mobility and stability throughout the shoulder's range of motion.

“ *Natural stresses on the shoulder area are also distributed more broadly, which reduces uneven pressure and associated wear on the artificial joint.* ”

The Bigliani/Flatow Complete Shoulder Solution is manufactured exclusively by Zimmer, an international leader in orthopedic implants.

The prosthesis is distributed through Zimmer's extremities division and holds a strong position in the global shoulder implant market.

**To see available technologies from research institutions, click [here](#) to visit the AUTM Innovation Marketplace.**

Share your story at [autm.net/betterworldproject](https://autm.net/betterworldproject)

#betterworldproject